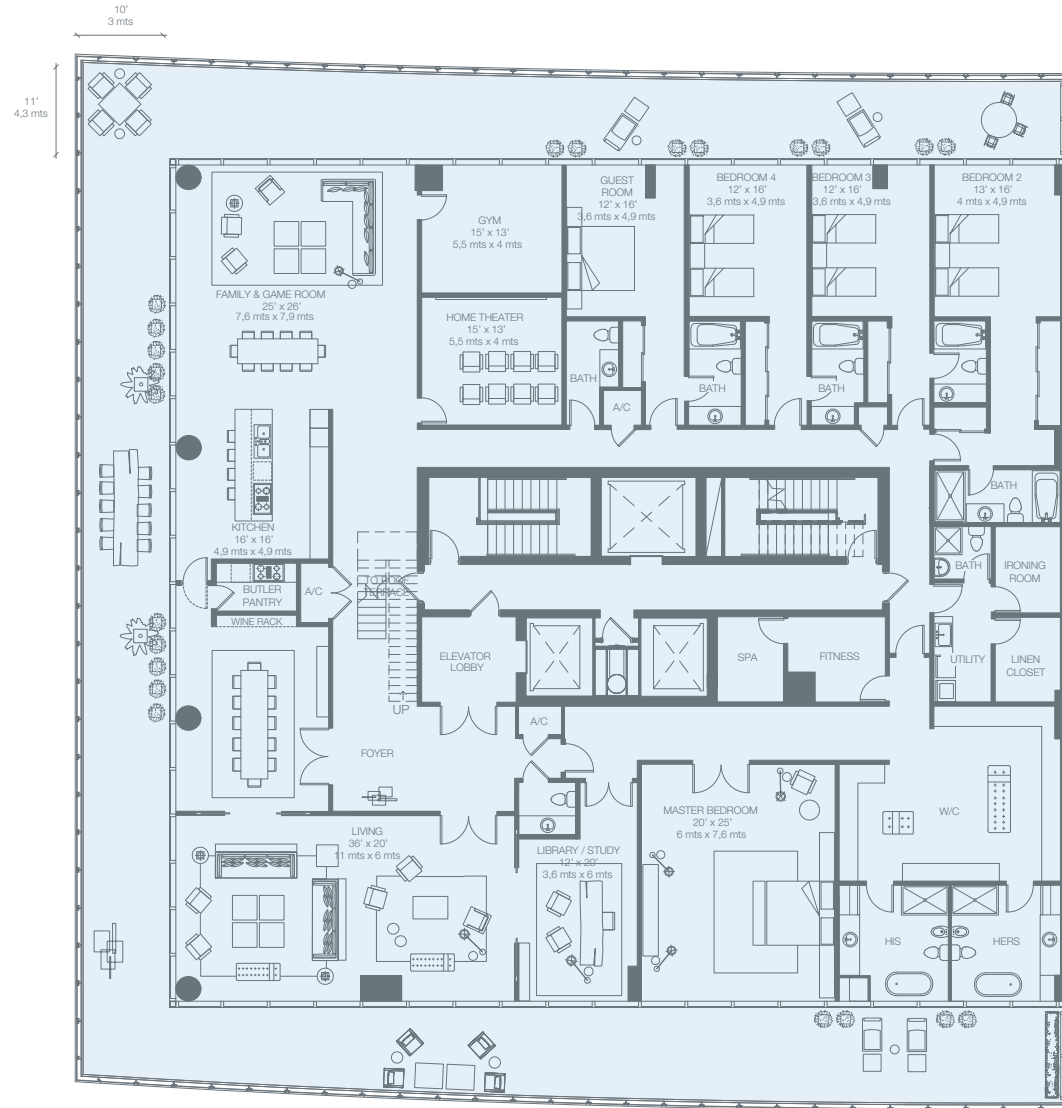
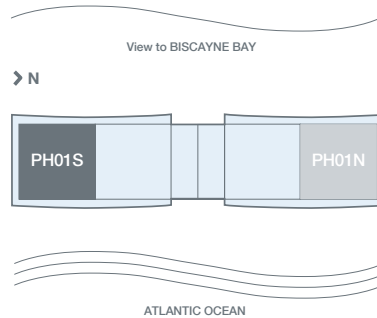


# PH01S

## 15th Floor

RESIDENCES	Upper Floor	358 sq. ft. 33 sq. mt.
	Lower Floor	7,894 sq. ft. 733 sq. mt.
TERRACE	Upper Floor	6,764 sq. ft. 628 sq. mt.
	Lower Floor	2,962 sq. ft. 275 sq. mt.
Total		17,978 sq. ft. 1,669 sq. mt.

## PRIVATE PARKING



## PENTHOUSE



Stated dimensions are measured to the exterior boundaries of the exterior walls and the centerline of interior demising walls and in fact vary from the dimensions that would be determined by using the description and definition of the "Unit" set forth in the Declaration (which generally only includes the interior airspace between the perimeter walls and excludes interior structural components). For the square footage of the "Unit" calculated in the manner set forth in the Declaration, see Exhibit "3" to the Declaration. Additionally, measurements of rooms set forth on any floor plan are generally taken at the greatest points of each given room (as if the room were a perfect rectangle), without regard for any cutouts. Accordingly, the area of the actual room will typically be smaller than the product obtained by multiplying the stated length times width. All dimensions are approximate, and all floor plans and development plans are subject to change.